



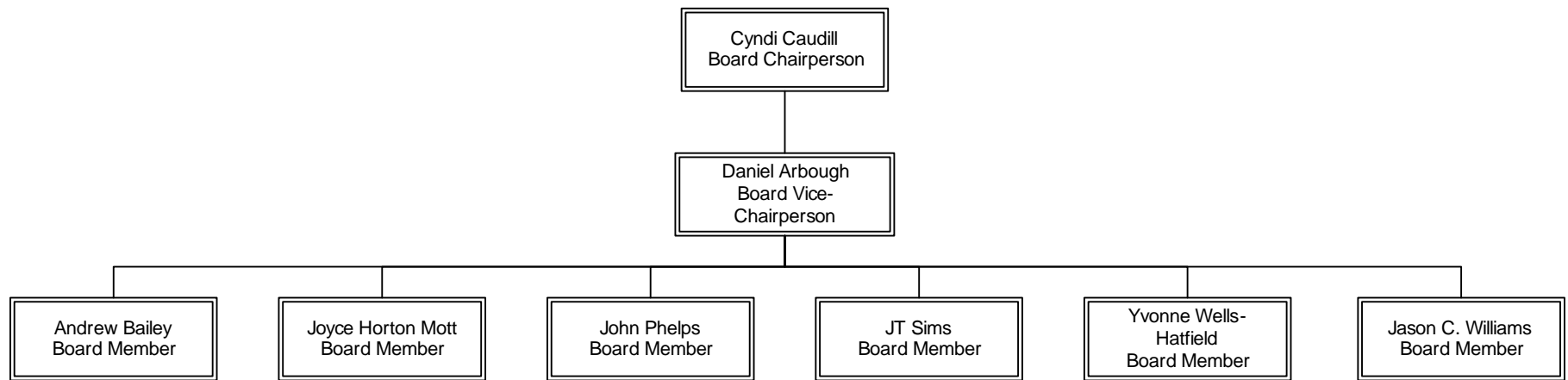
Louisville and Jefferson County Metropolitan Sewer District

Organizational Chart
Effective 04/10/17

Organizational Summary

	<u>Total</u> <u>Positions</u>	<u>Current</u> <u>Actual</u>	<u>Vacant</u> <u>(Budgeted)</u>	<u>New/</u> <u>Unbudgeted</u> <u>(Vacant)</u>	<u>Exempt</u>	<u>Non-</u> <u>Exempt</u>	<u>Unit</u>	<u>Net</u> <u>Overbudget</u>
Executive Offices Division								
Executive Offices	6	5	1	0	5	1	0	0
Customer Relations	21	18	3	0	4	17	0	0
Facilities, Safety & Security	14	11	3	0	8	6	0	0
Legal Division	10	7	3	0	8	2	0	0
Human Resources Division	16	15	1	0	11	5	0	0
Information Technology Division	33	30	3	0	28	5	0	0
Finance Division	34	31	3	0	15	19	0	0
Engineering Division								
Eng Admin, Reg Compliance, Records & GIS	19.5	15	4.5	0	11	8.5	0	0
Engineering Technical Services	37	28	9	0	28	9	0	0
Development & Stormwater Services	44	42	2	0	19	25	0	0
Operations Division								
Administration	2	2	0	0	1	1	0	0
Treatment Facilities	87	83	4	0	18	15	54	0
Treatment Facilities (Maintenance)	38	33	5	0	5	0	33	0
Collections System	86	81	5	0	13	22	51	0
Collections System (Sanitary)	72	68	4	0	8	2	62	0
Drainage and Flood Protection	100	92	8	0	10	4	86	0
Support Services	49	49	0	0	9	26	14	0
Performance Metrics	14	10	4	0	6	8	0	0
DISTRICT TOTAL	682.5	620	62.5	0	207	175.5	300	0

Board Members

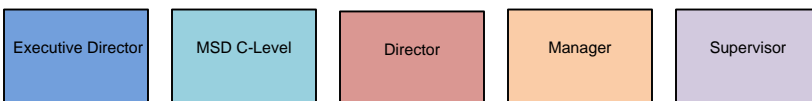
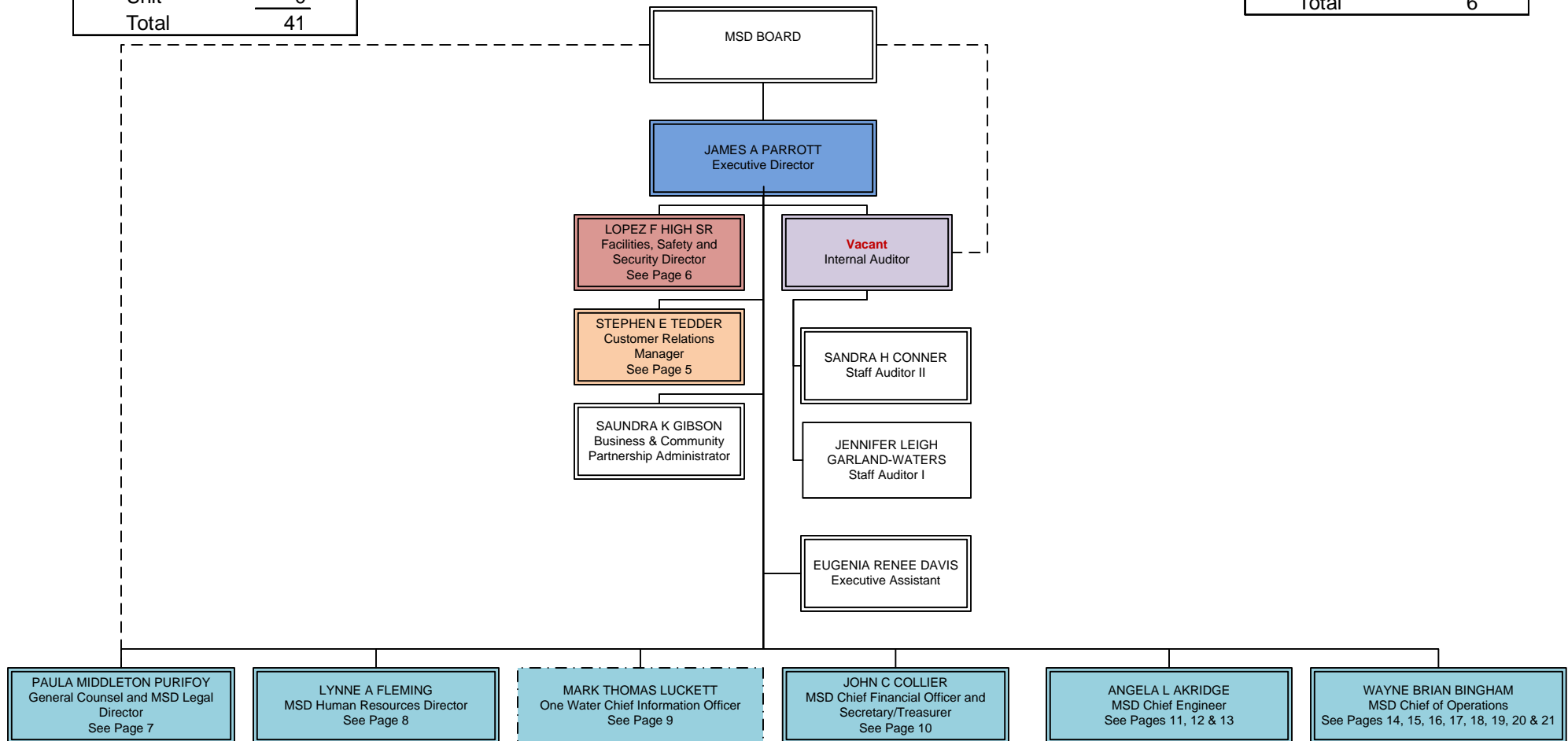


Executive Offices Division

Executive Offices

DIVISION BUDGET STATUS	
Actual	34
Vacant	7
Authorized	41
Exempt	17
Non-Exempt	24
Unit	0
Total	41

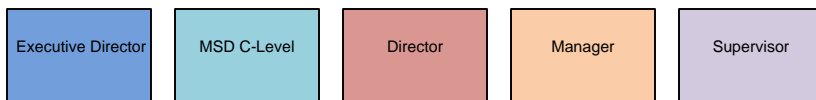
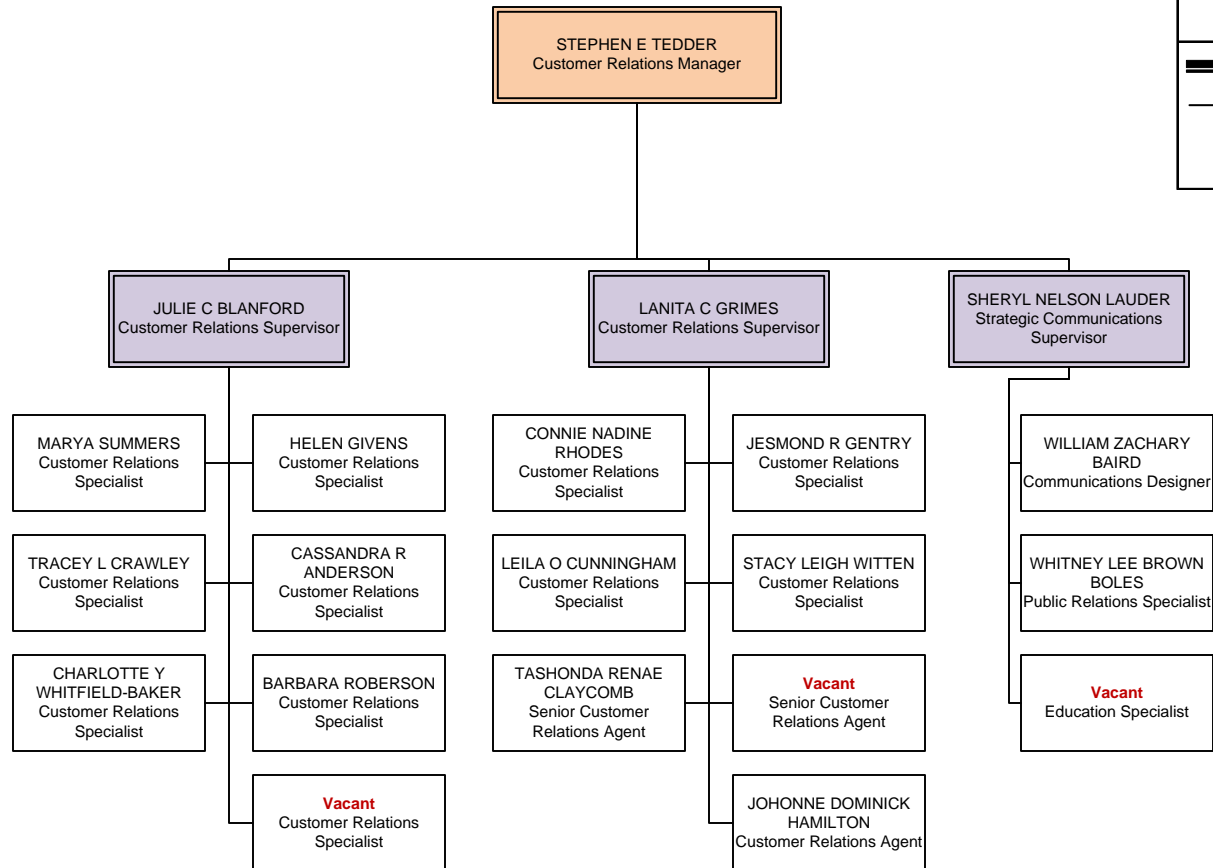
BUDGET STATUS	
Actual	5
Vacant	1
Authorized	6
Exempt	5
Non-Exempt	1
Unit	0
Total	6





Executive Offices Division

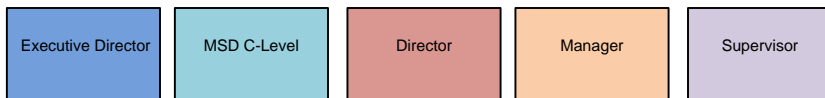
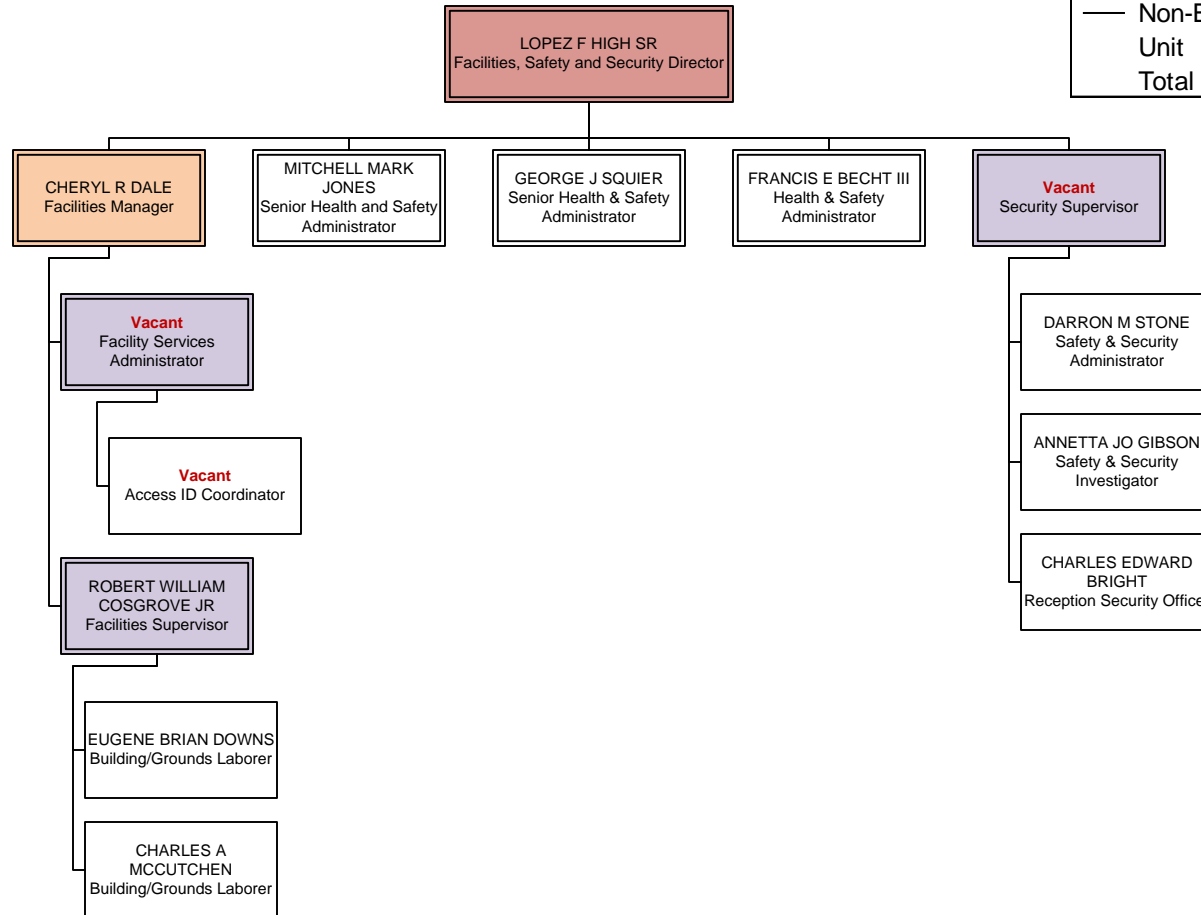
Customer Relations

BUDGET STATUS	
Actual	18
Vacant	3
Authorized	21
<hr/>	
Exempt	4
Non-Exempt	17
Unit	0
Total	21





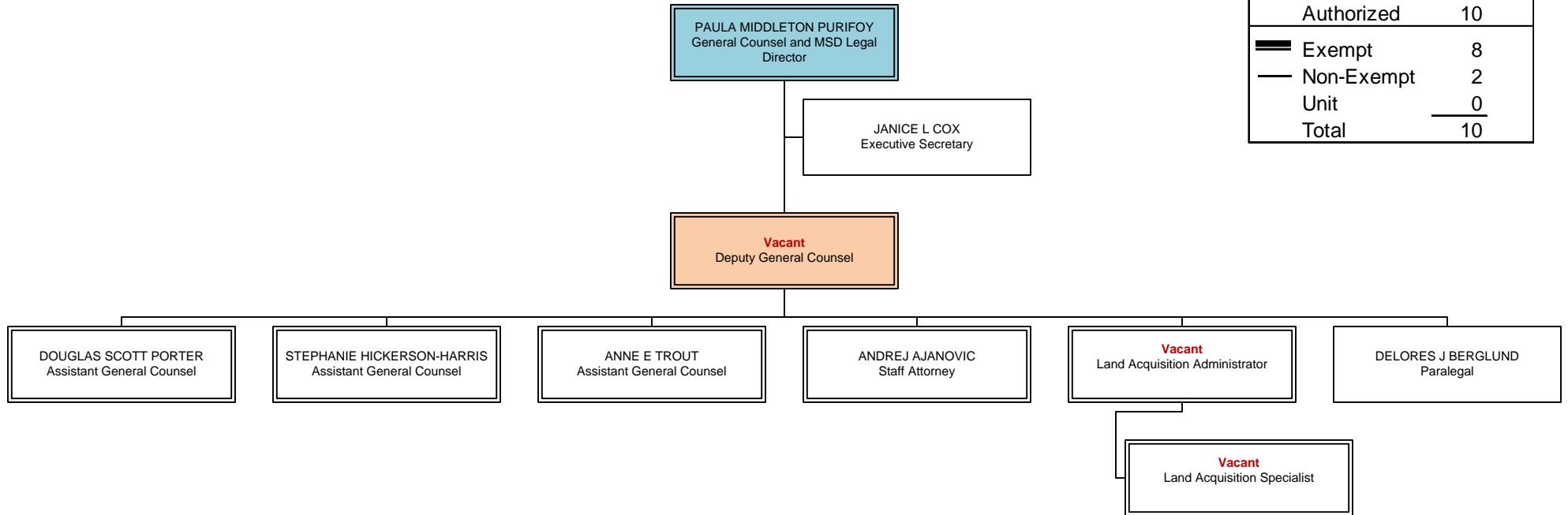
Executive Offices Division Facilities, Safety & Security

BUDGET STATUS	
Actual	11.0
Vacant	<u>3.0</u>
Authorized	14.0
 Exempt	8.0
 Non-Exempt	6.0
Unit	<u>0.0</u>
Total	14.0



Legal Division

BUDGET STATUS	
Actual	7
Vacant	<u>3</u>
Authorized	10
 Exempt	8
 Non-Exempt	2
Unit	<u>0</u>
Total	10



Executive Director

MSD C-Level

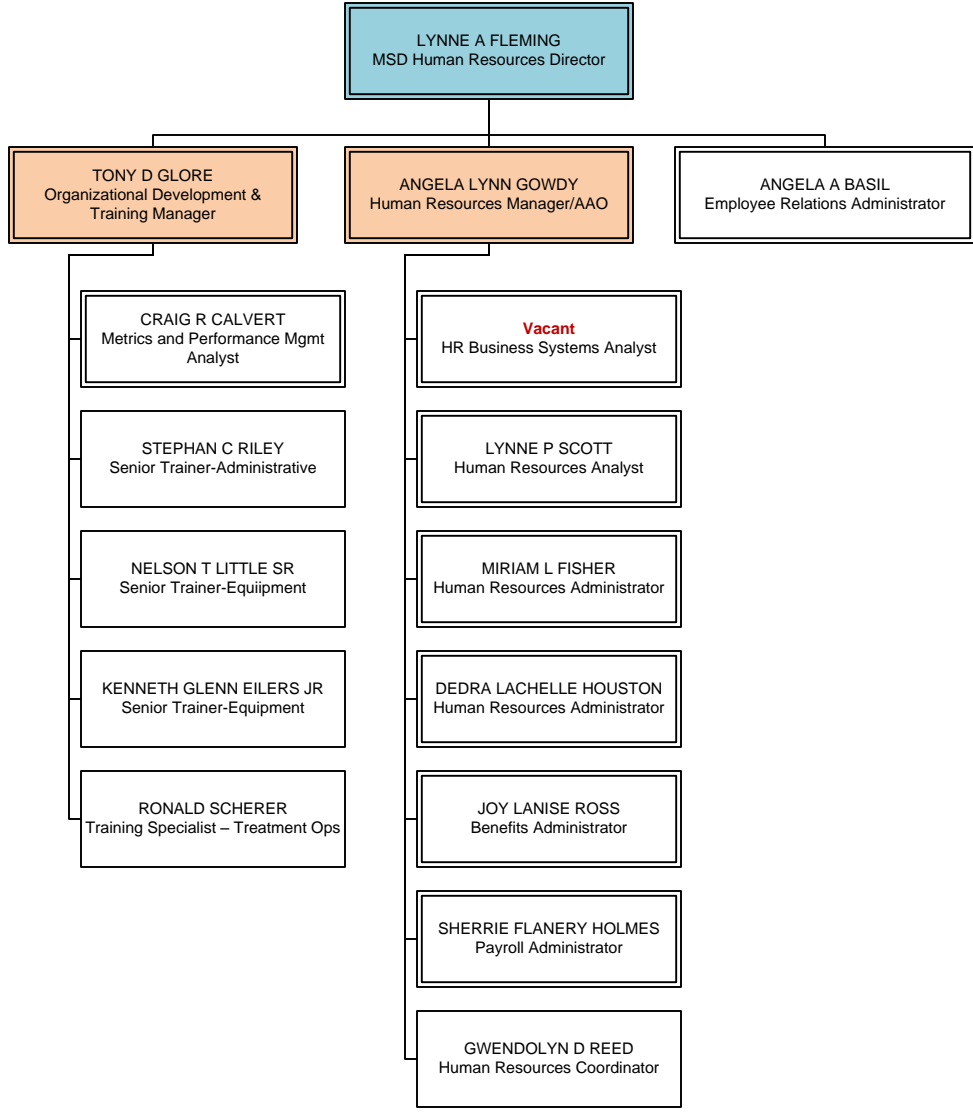
Director

Manager

Supervisor

Human Resources Division

BUDGET STATUS	
Actual	15.0
Vacant	<u>1.0</u>
Authorized	16.0
■ Exempt	11.0
— Non-Exempt	5.0
Unit	<u>0.0</u>
Total	16.0



Executive Director

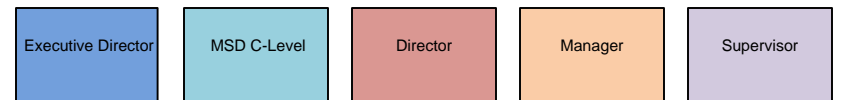
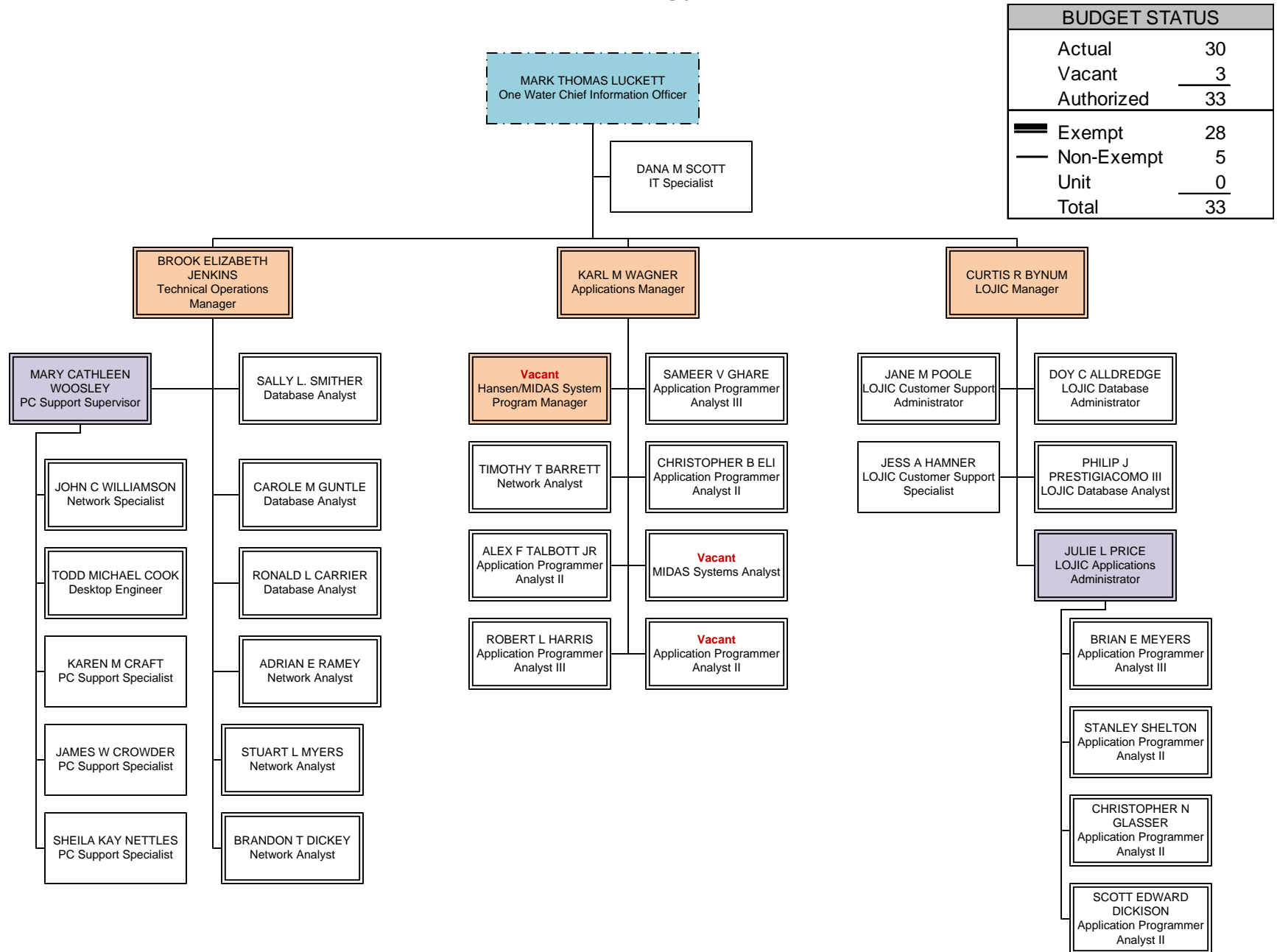
MSD C-Level

Director

Manager

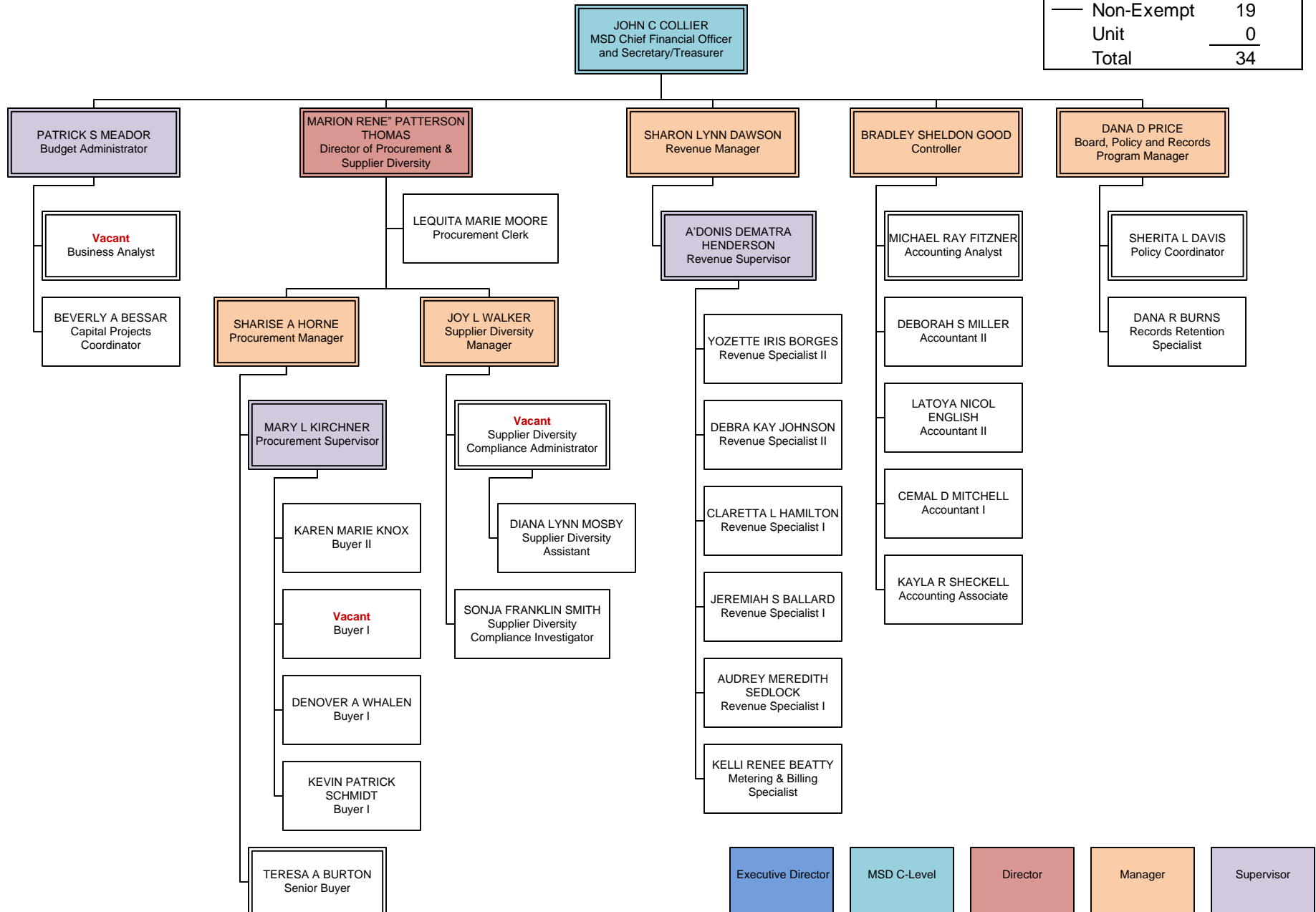
Supervisor

Information Technology Division



Finance Division

BUDGET STATUS	
Actual	31
Vacant	3
Authorized	34
<hr/>	
Exempt	15
Non-Exempt	19
Unit	0
Total	34

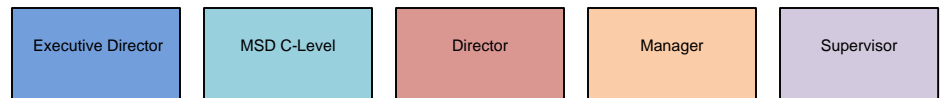
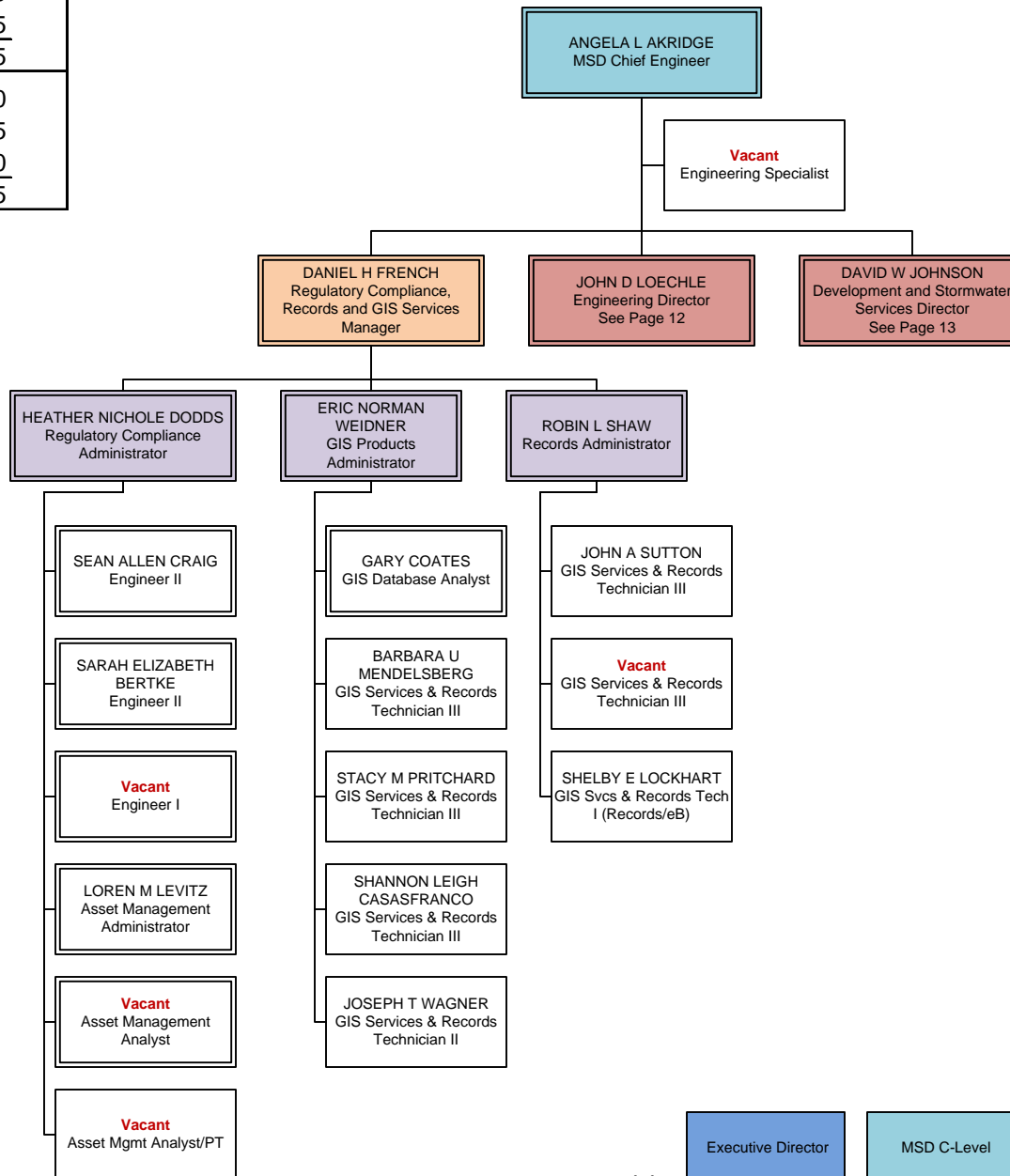


Engineering Division

Engineering Admin, Regulatory Compliance, Records & GIS

DIVISION BUDGET STATUS	
Actual	85.0
Vacant	15.5
Authorized	100.5
Exempt	58.0
Non-Exempt	42.5
Unit	0.0
Total	100.5

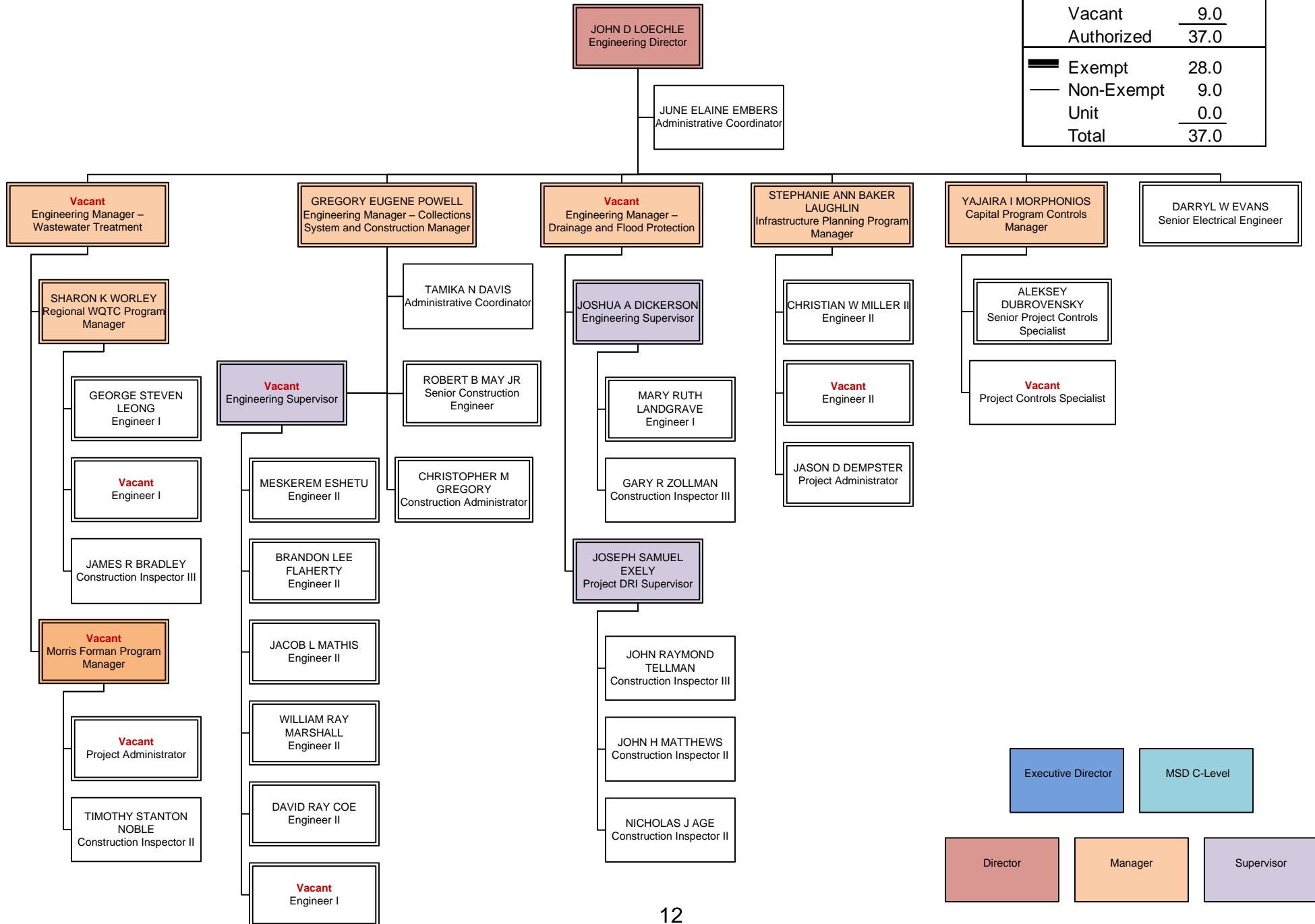
BUDGET STATUS	
Actual	15.0
Vacant	4.5
Authorized	19.5
Exempt	11.0
Non-Exempt	8.5
Unit	0.0
Total	19.5



Engineering Division

Engineering Technical Services

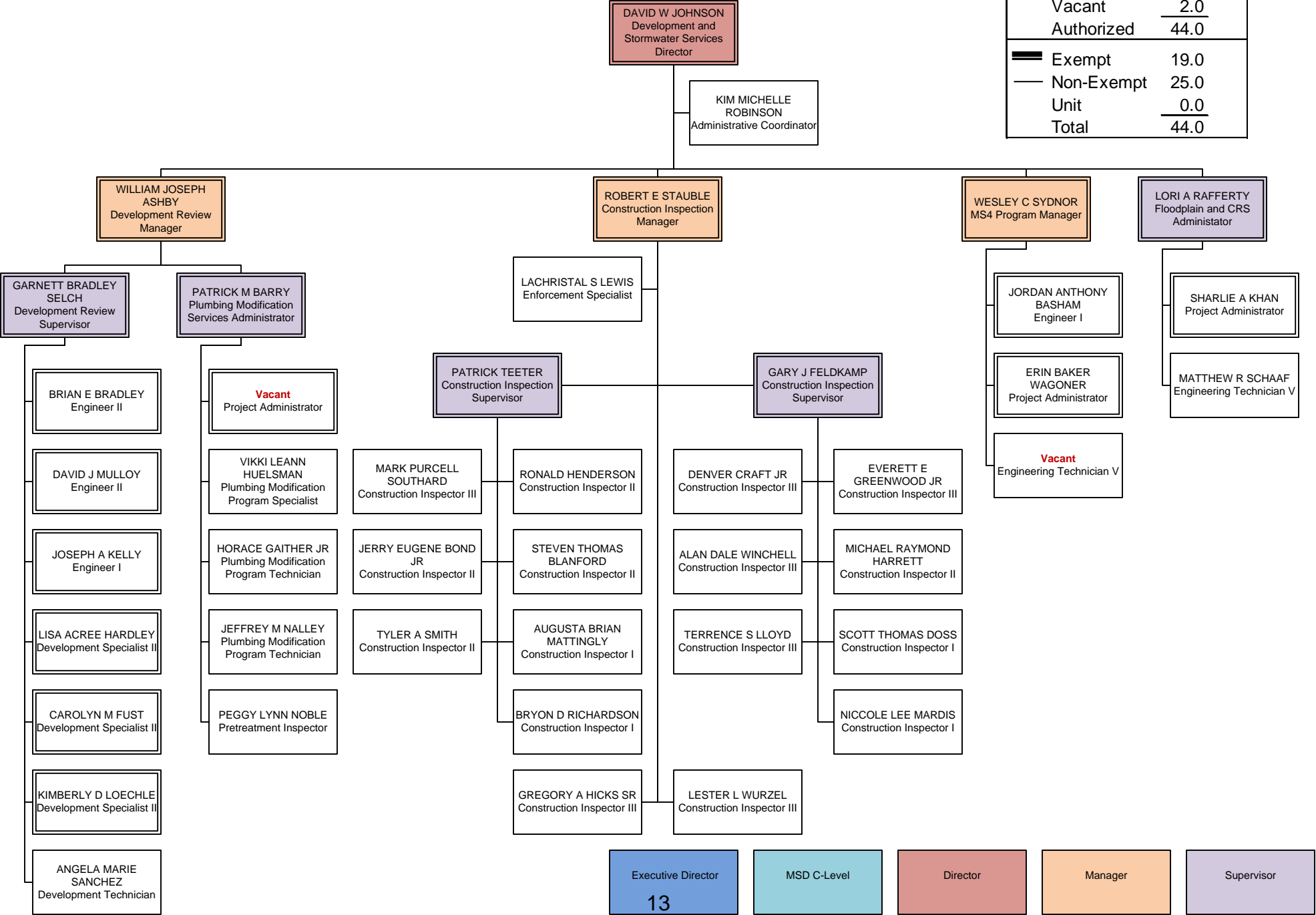
BUDGET STATUS	
Actual	28.0
Vacant	9.0
Authorized	37.0
<hr/>	
Exempt	28.0
Non-Exempt	9.0
Unit	0.0
Total	37.0



Engineering Division

Development & Stormwater Svcs

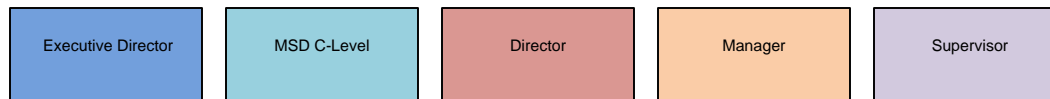
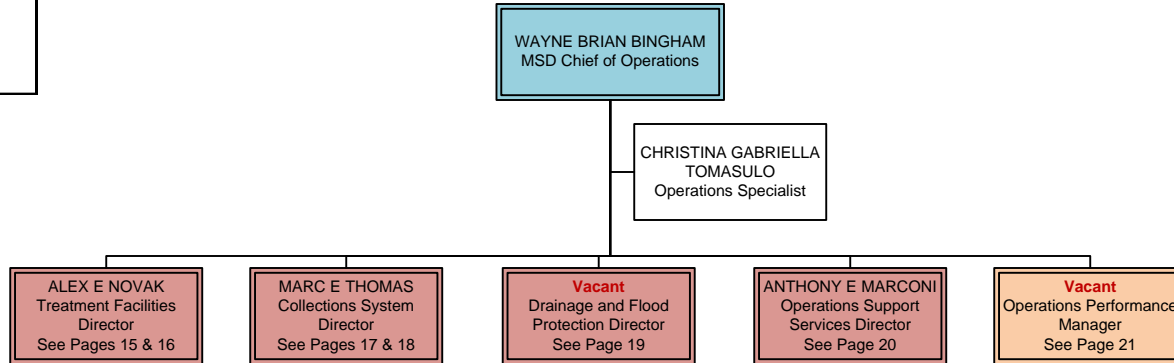
BUDGET STATUS	
Actual	42.0
Vacant	2.0
Authorized	44.0
<hr/>	
Exempt	19.0
Non-Exempt	25.0
Unit	0.0
Total	44.0



Operations Division Administration

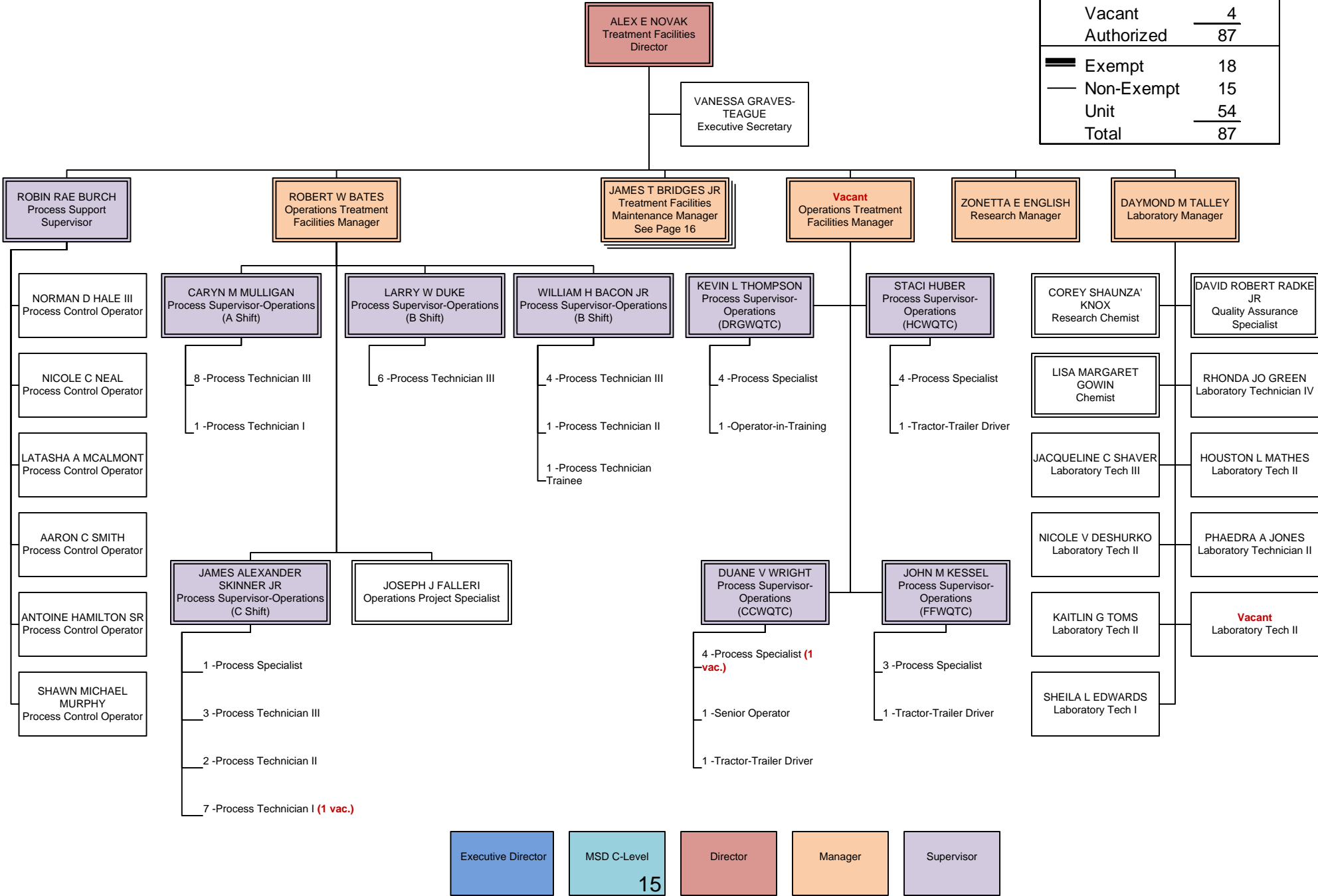
DIVISION BUDGET STATUS	
Actual	418
Vacant	<u>30</u>
Authorized	448
■ Exempt	70
— Non-Exempt	78
Unit	<u>300</u>
Total	448

BUDGET STATUS	
Actual	2
Vacant	<u>0</u>
Authorized	2
■ Exempt	1
— Non-Exempt	1
Unit	<u>0</u>
Total	2



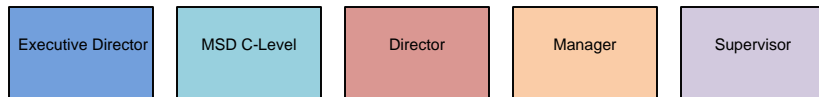
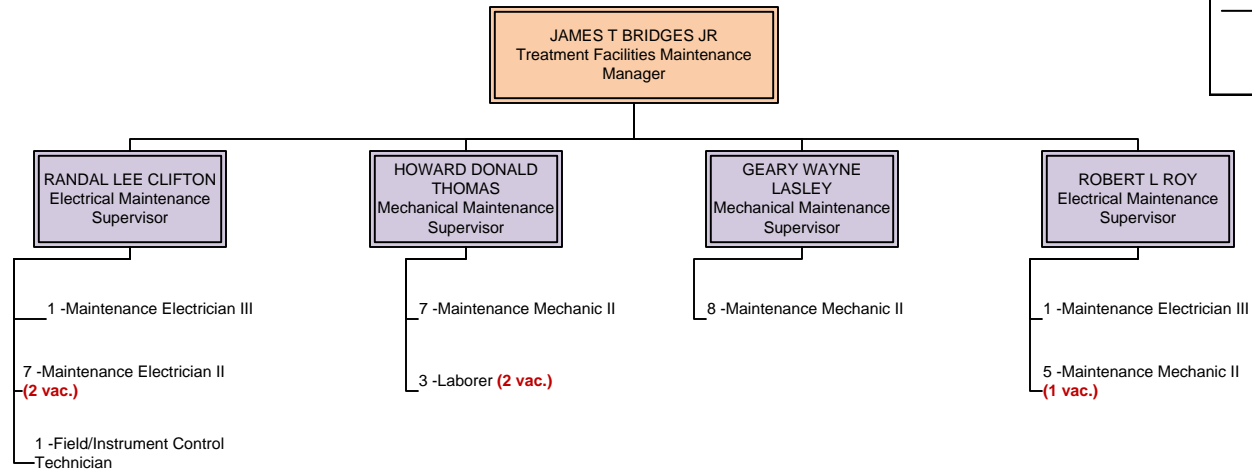
Operations Division
Treatment Facilities

BUDGET STATUS	
Actual	83
Vacant	<u>4</u>
Authorized	87
<hr/>	
Exempt	18
Non-Exempt	15
Unit	<u>54</u>
Total	87



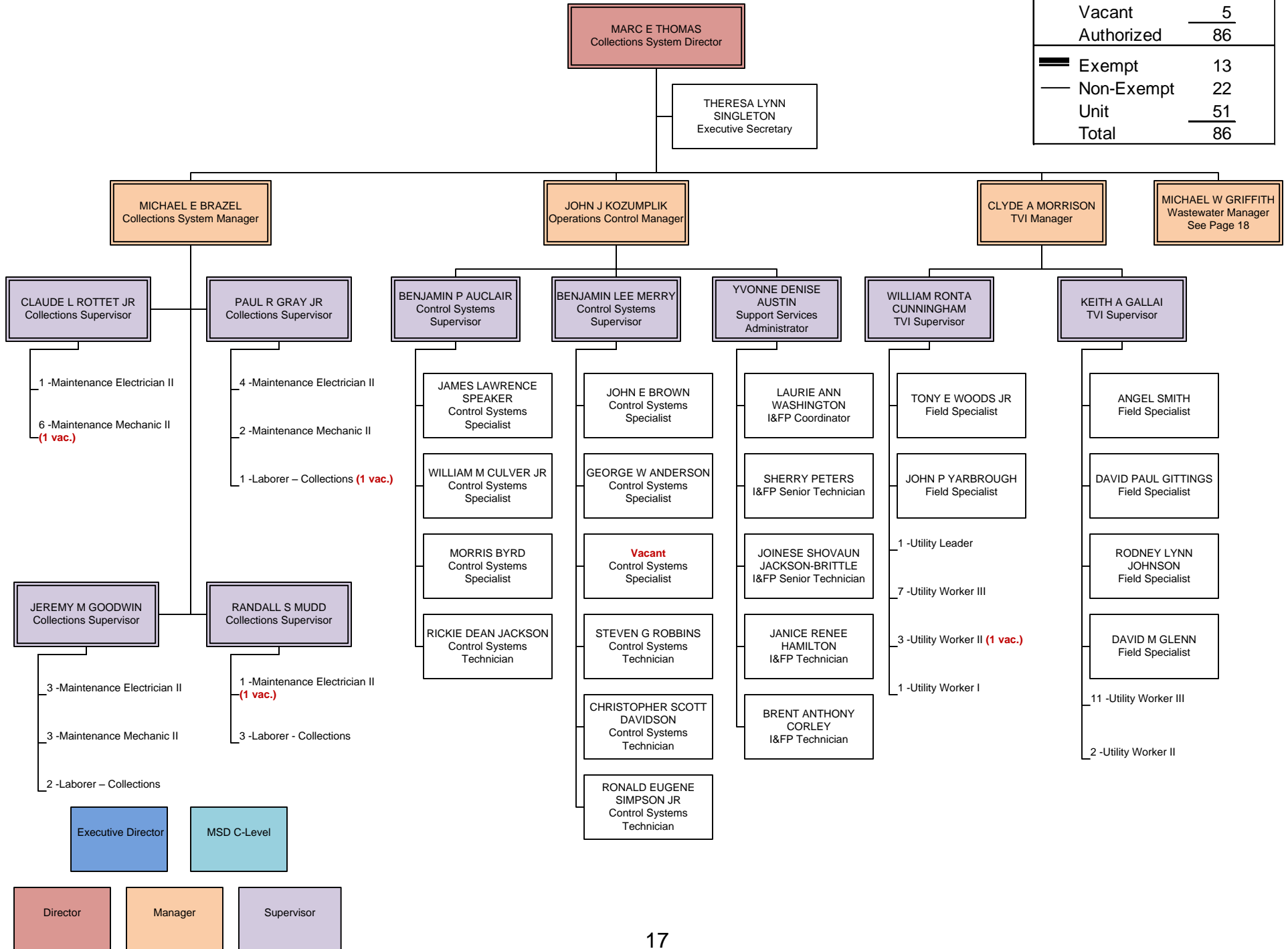
Operations Division Treatment Facilities (Maintenance)

BUDGET STATUS	
Actual	33
Vacant	<u>5</u>
Authorized	38
Exempt	5
Non-Exempt	0
Unit	<u>33</u>
Total	38





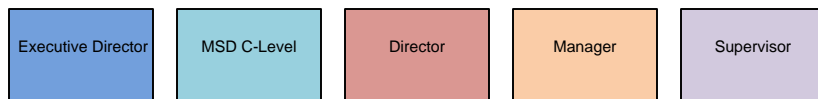
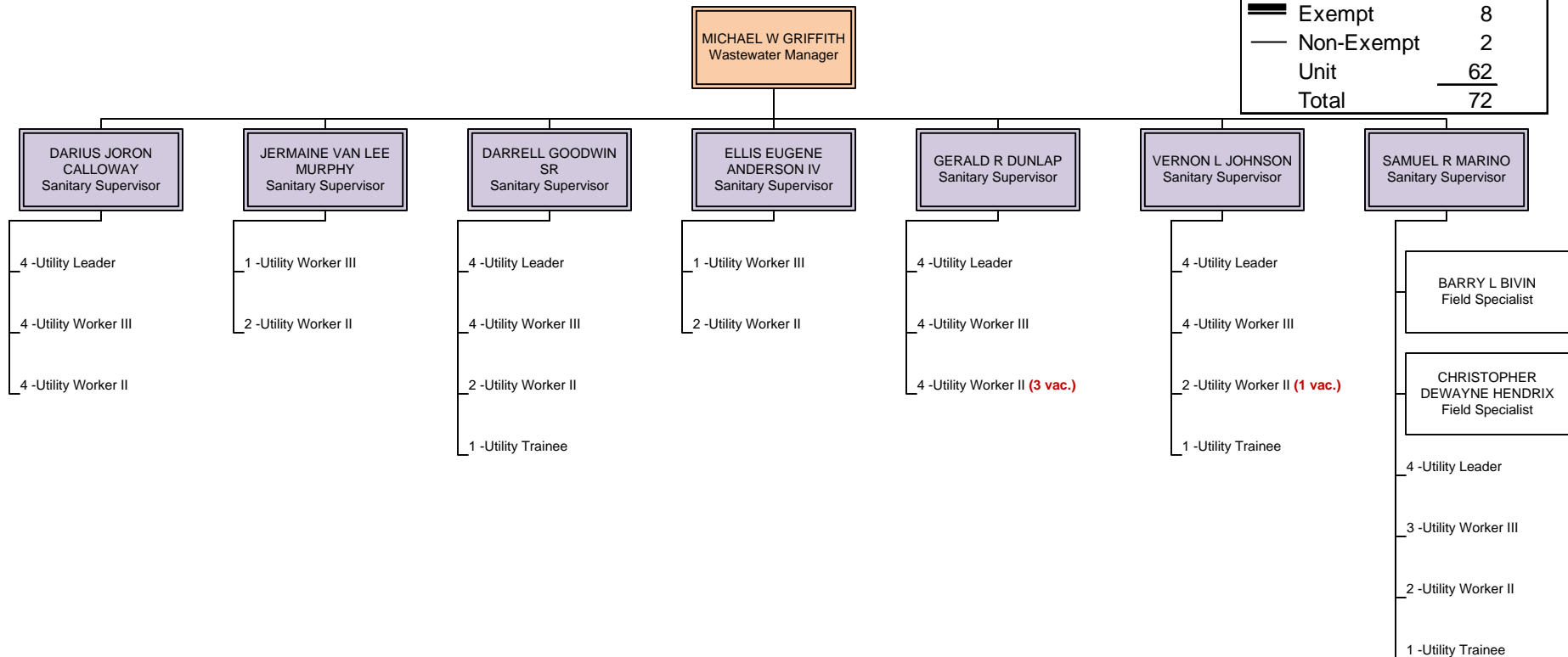
Operations Division Collections System

BUDGET STATUS	
Actual	81
Vacant	5
Authorized	86
Exempt	13
Non-Exempt	22
Unit	51
Total	86



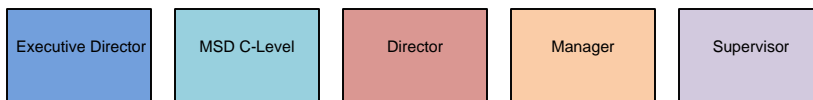
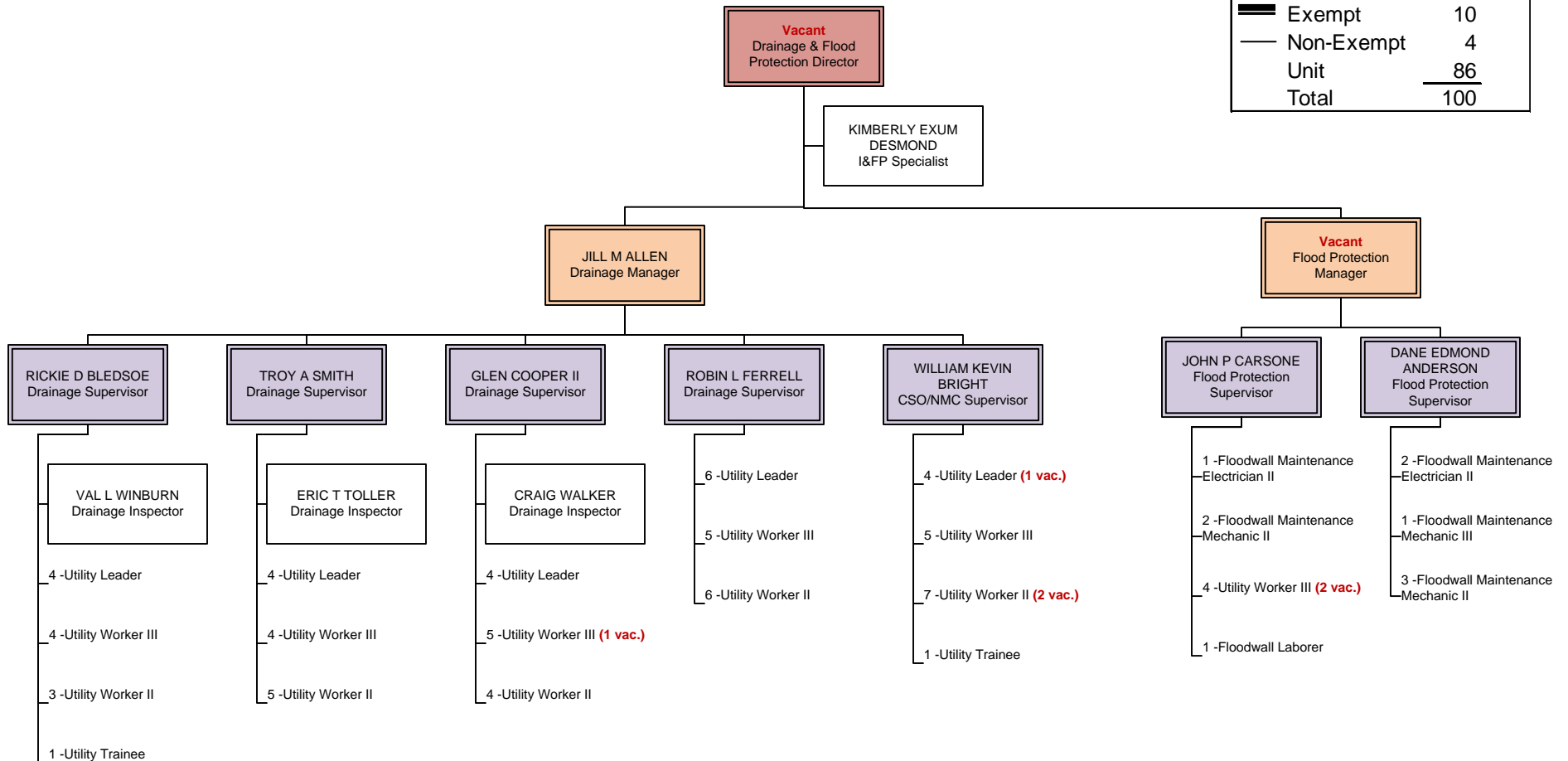
Operations Division Collections System (Sanitary)

BUDGET STATUS	
Actual	68
Vacant	<u>4</u>
Authorized	72
 Exempt	8
 Non-Exempt	2
Unit	<u>62</u>
Total	72



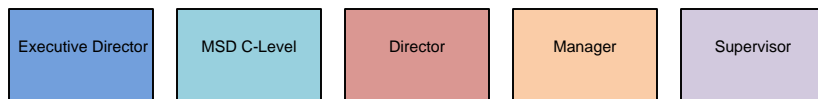
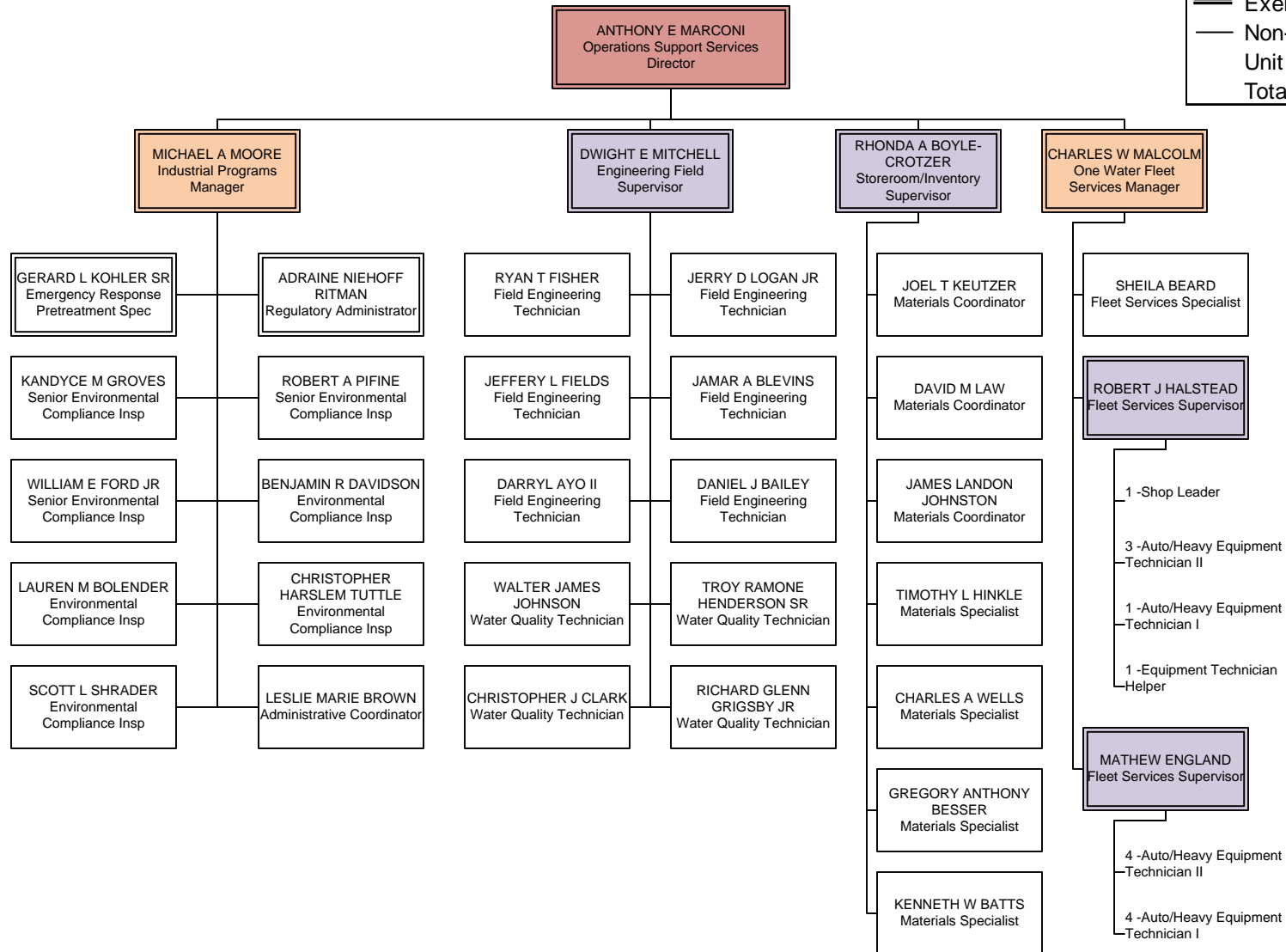
Operations Division Drainage and Flood Protection

BUDGET STATUS	
Actual	92
Vacant	8
Authorized	100
<hr/>	
Exempt	10
Non-Exempt	4
Unit	86
Total	100



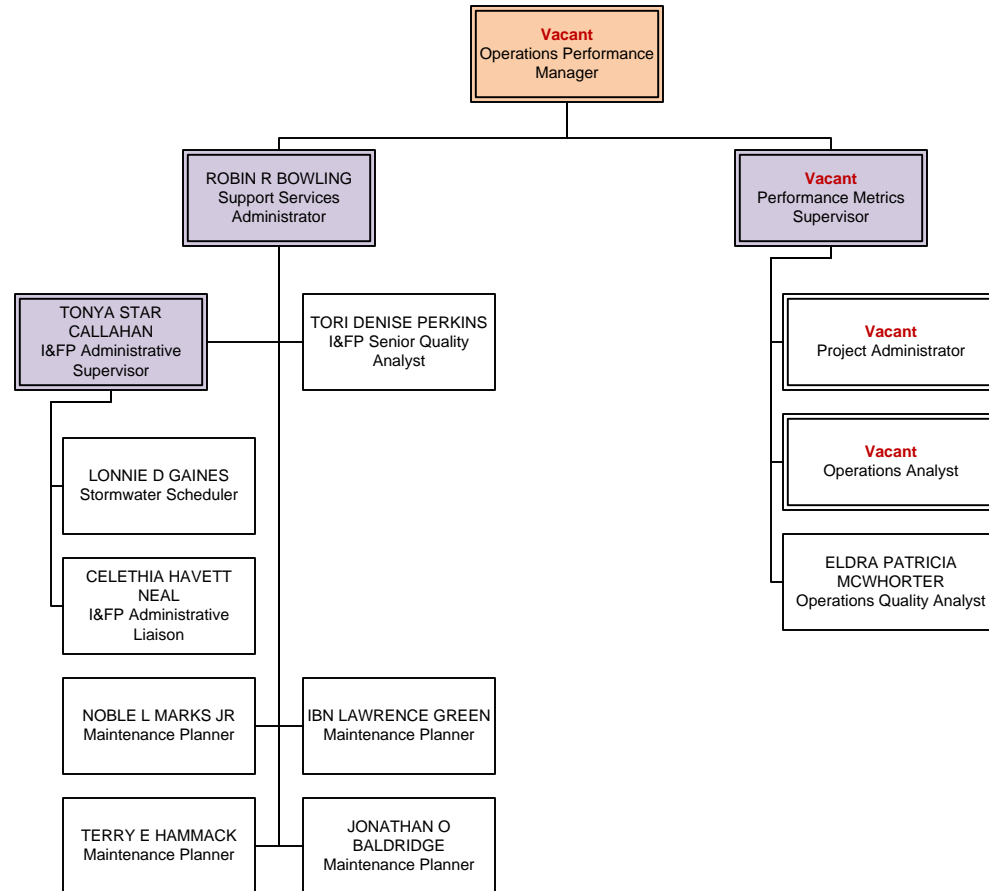
Operations Division Support Services

BUDGET STATUS	
Actual	49
Vacant	0
Authorized	49
<hr/>	
Exempt	9
Non-Exempt	26
Unit	14
Total	49



Operations Division

Performance Metrics



BUDGET STATUS	
Actual	10
Vacant	4
Authorized	14
<hr/>	
Exempt	6
Non-Exempt	8
Unit	0
Total	14

